



”Unlocking the flexible packaging dilemma”

KIDV CoP Technical Work Stream

Dominika Maruszak – Dankbaar
PepsiCo R&D

February 11th, 2021

CoP Technical Work Stream

The challenge:

- The current infrastructure focuses on **PE Flex**
- **metPP** is currently collected but not recycled
- **Redesign** led by Brand Owners is only the first step to closing the gap
- Establishing **PP** (or PO flex) **stream** is critical to realise our route towards **100% recyclability**



Product quality CANNOT be compromised!

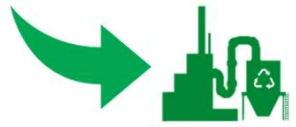
Plastic Waste in The Netherlands



- In 2018 about **523kT*** plastic packaging was put into Dutch market
- The estimate is that 30-40% of it is film



About **359kT*** plastic packaging was **collected**



and **~299 kT*** recycled



The estimated range for PP flex is 30-60kT put into the market**

*Afvalfonds data 2018
** variance in reports

Q1

What is the **amount of all PP flex** in Dutch waste stream?



Q2

Can we **sort it out** and use **metPP flex** as feedstock for **new applications**?



Technical Work Stream Trial

TESTING FACILITY

NTCP nationaal testcentrum
circulaire plastics



TRIAL SPONSORS

MARS WRIGLEY



PEPSICO



Intersnack



FrieslandCampina

Trial Headlines

- **SCALE:** ~500kg of each
- **SOURCE:** KSI/Omrin
- **REGION:** North Holland



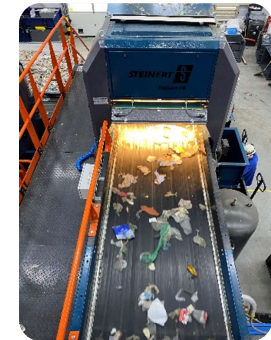
MSW (Nascheiden)
Post Consumer Mixed Stream Waste



PMD (Bronschedeien)
Source Separated Post Consumer waste stream

Target material:

- PP transparent clear
- PP transparent clear printed
- PP opaque coloured
- PP metalized



CoP Technical Work Stream

- The trial showed that there is too much flex material loss in the **sorting process**
- The target **PP flex** portion in the PMD (light fraction) was about **1/3 of all flexibles**
- Significantly more metPP was found in MSW
- In **redesign** PP (and PE) will be the main polymers used; we need to prepare the infrastructure for the future increase of **flex PP in the stream**
- The trial is just a first step and numbers are **directional**

WHAT's next?

A GREATER **ENGAGEMENT** OF THE VALUE CHAIN MEMBERS AND AUTHORITIES IS NEEDED TO TAKE THIS TRIAL FURTHER!

Thank you!

